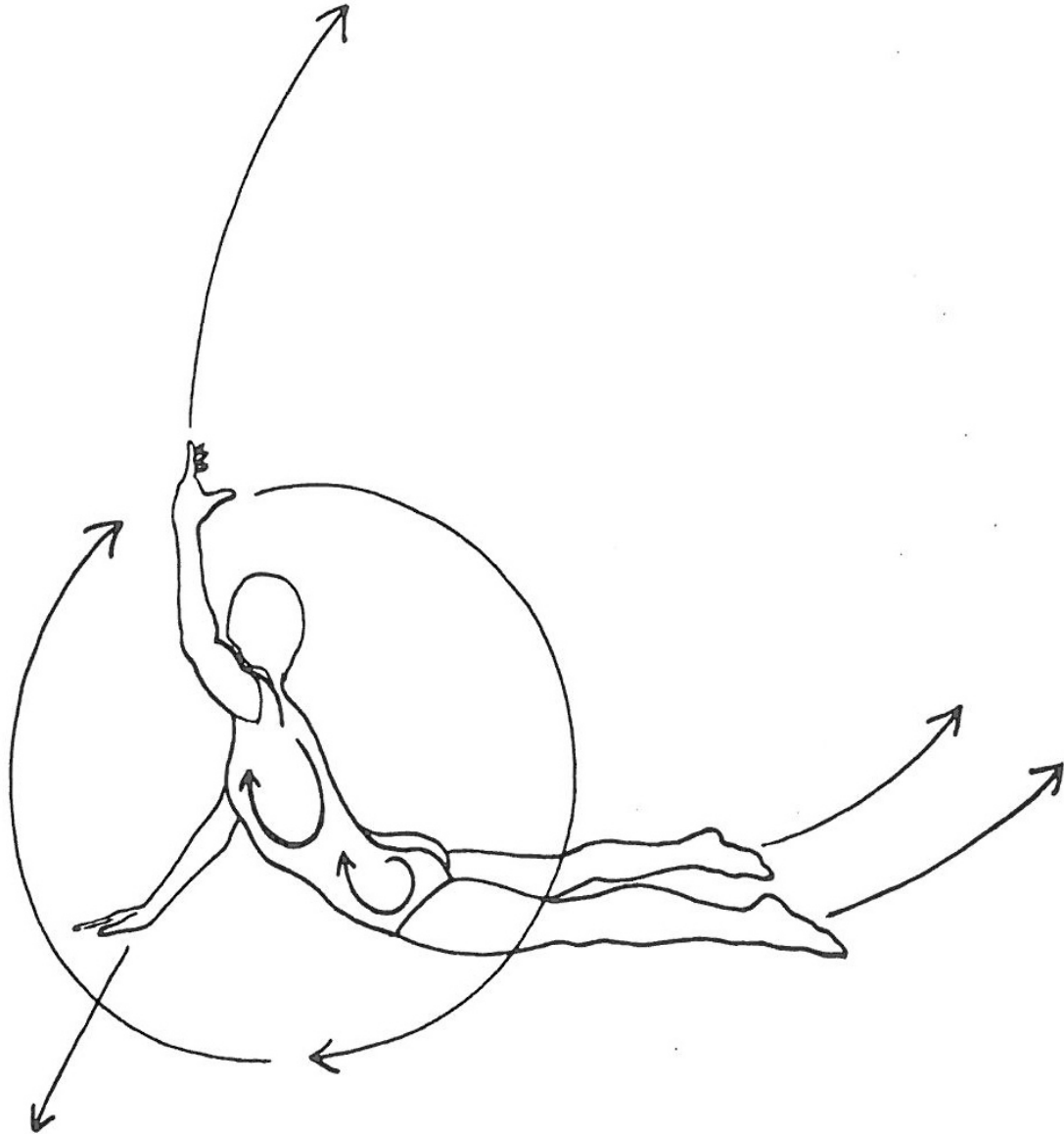
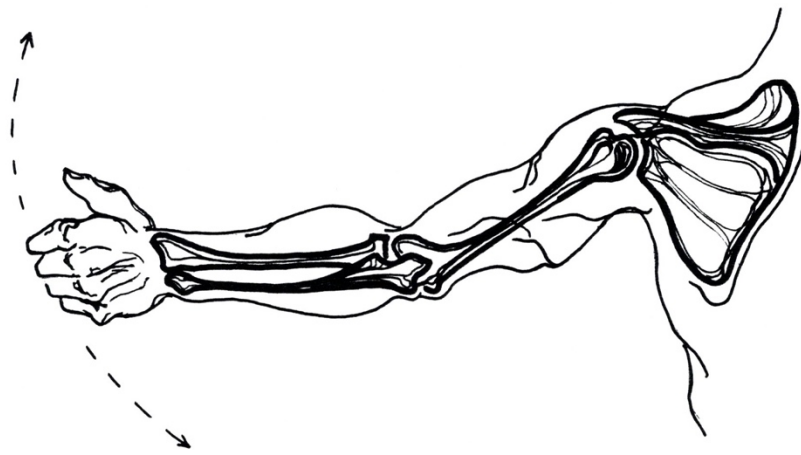
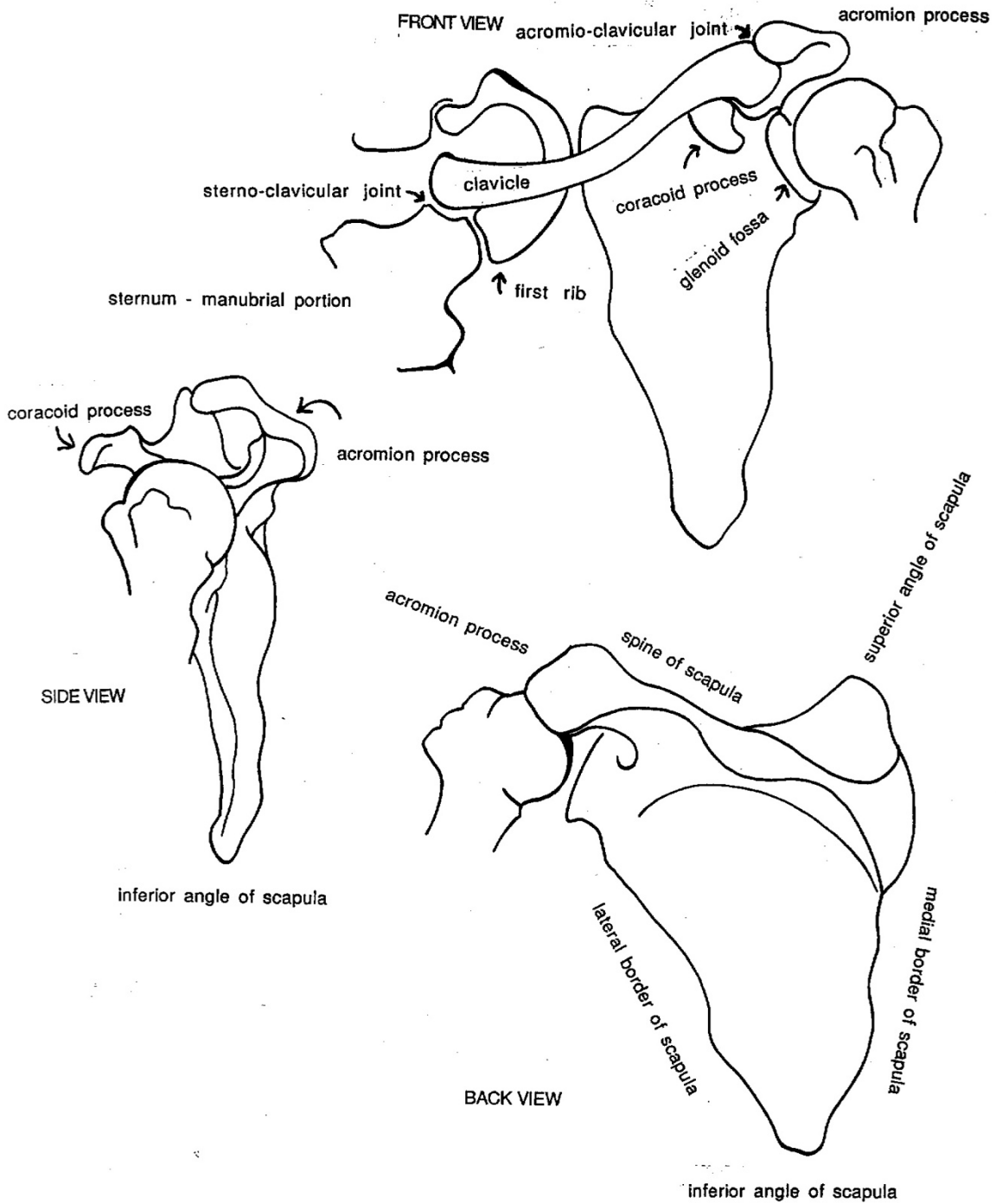


ILLUSTRATIONS OF THE SHOULDER JOINT - BONES, MOVEMENT AND MUSCLES

All illustrations drawn freehand by Irene Dowd between 1970 and 2024 drawn from live models, human bone skeleton, cadaver dissection, photographs of moving figures, x-rays and MRI scans, in addition to schematics created by Irene to illustrate various ideas & images

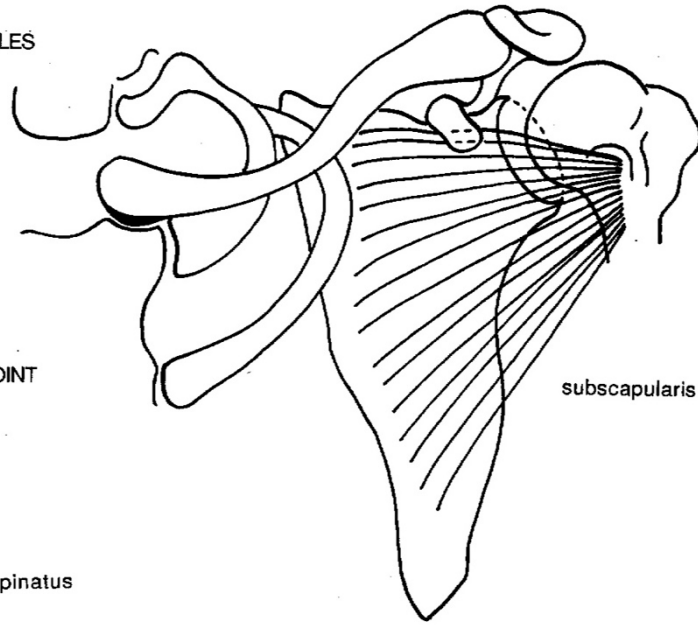




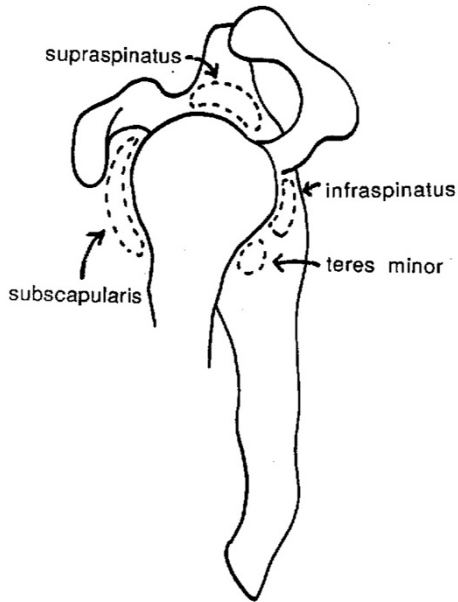


FRONT VIEW OF SHOULDER JOINT

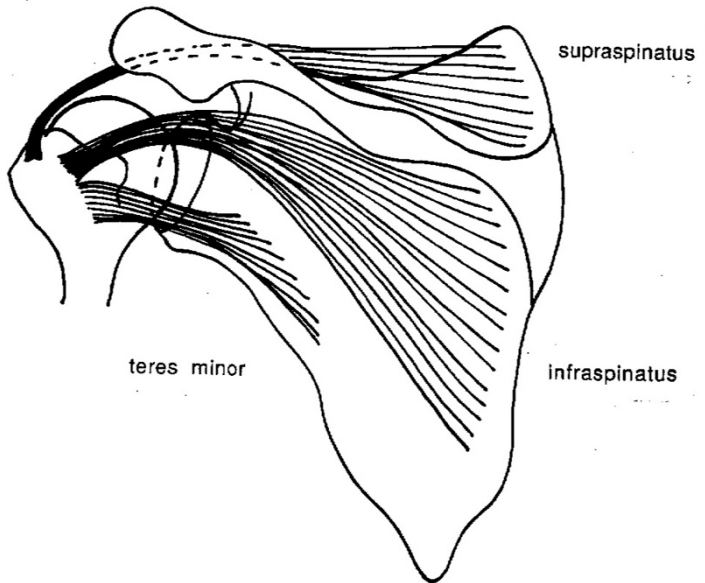
ROTATOR CUFF MUSCLES



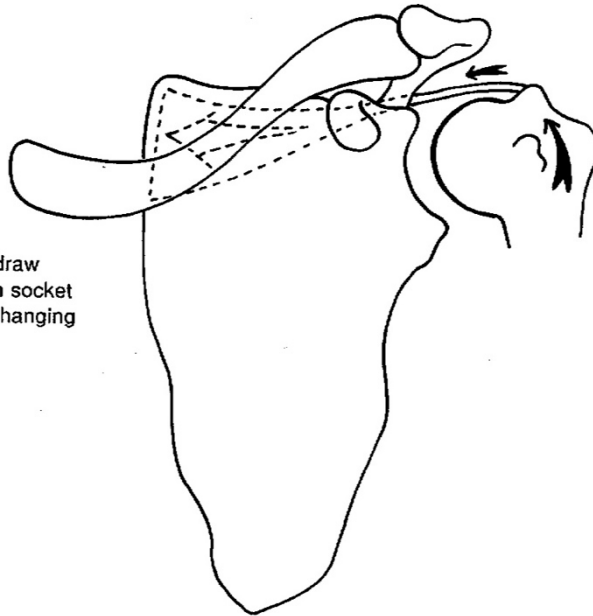
SIDE VIEW OF SHOULDER JOINT



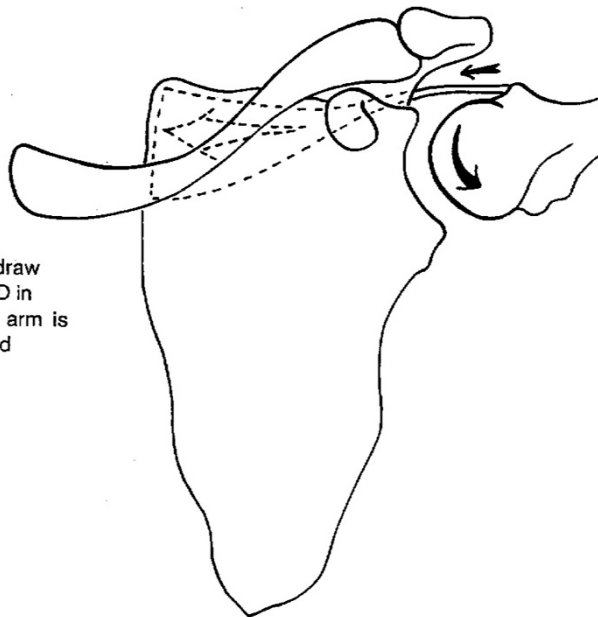
BACK VIEW OF SHOULDER JOINT



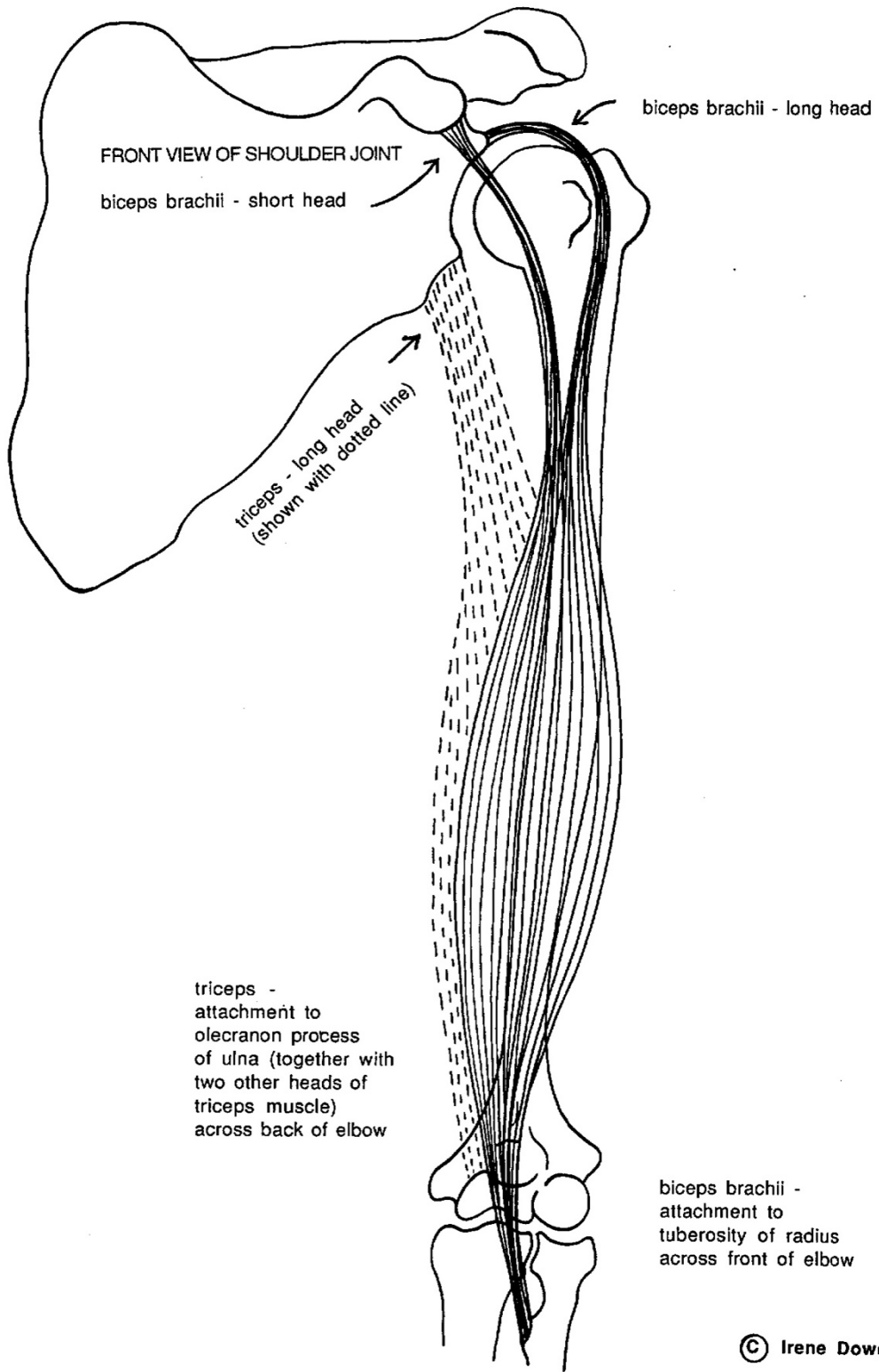
FRONT VIEW OF SHOULDER JOINT:
ACTION OF SUPRASPINATUS MUSCLE

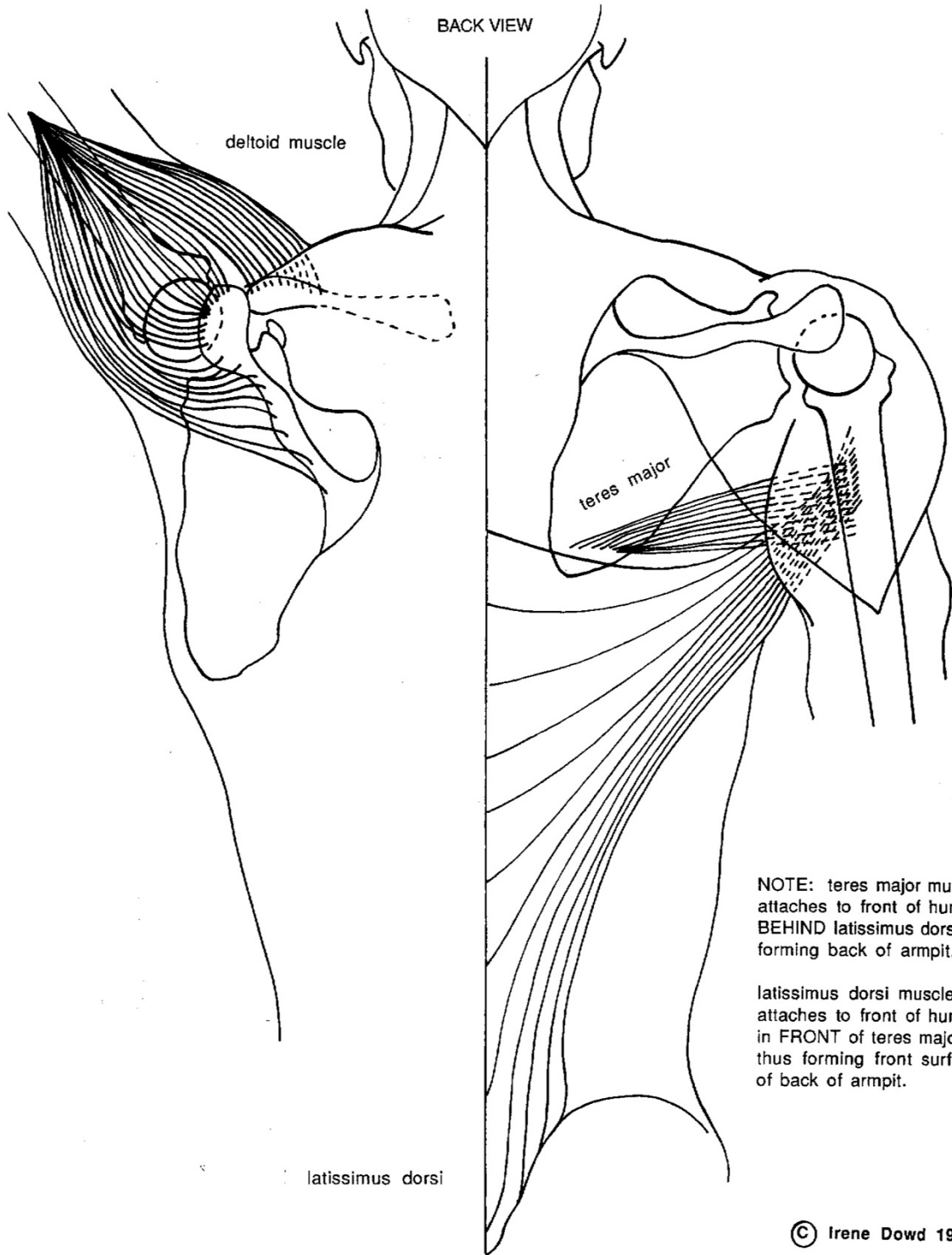


Action of supraspinatus to draw head of humerus UPWARD in socket (glenoid fossa) when arm is hanging DOWN.



Action of supraspinatus to draw head of humerus DOWNWARD in socket (glenoid fossa) when arm is moving UP towards overhead position.





BACK VIEW

deltoid muscle

teres major

latissimus dorsi

NOTE: teres major muscle
attaches to front of humerus
BEHIND latissimus dorsi, thus
forming back of armpit.

latissimus dorsi muscle
attaches to front of humerus
in FRONT of teres major,
thus forming front surface
of back of armpit.

© Irene Dowd 1996

FRONT VIEW

