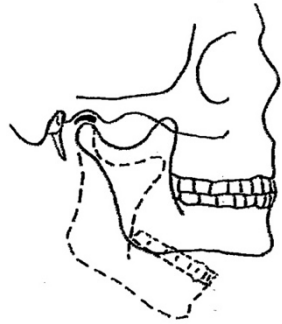


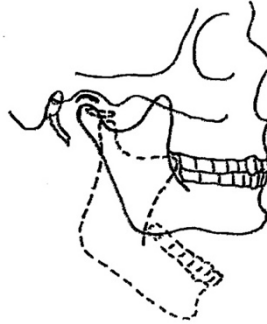
**ILLUSTRATIONS OF THE HEAD & NECK - STRUCTURE AND MUSCLES**

All illustrations drawn freehand by Irene Dowd between 1970 and 2024  
drawn from live models, human bone skeleton, cadaver dissection, photographs of moving figures, x-rays  
and MRI scans, in addition to schematics created by Irene Dowd

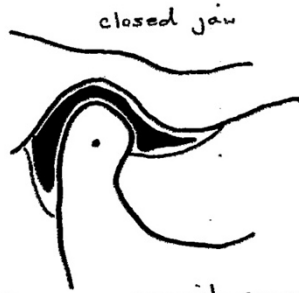




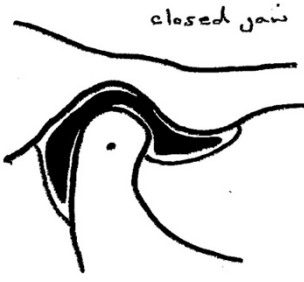
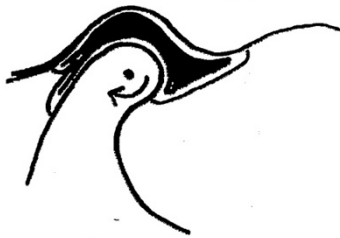
Passive opening of jaw



Active opening of jaw  
(note forward excursion of  
jaw & articular disc)

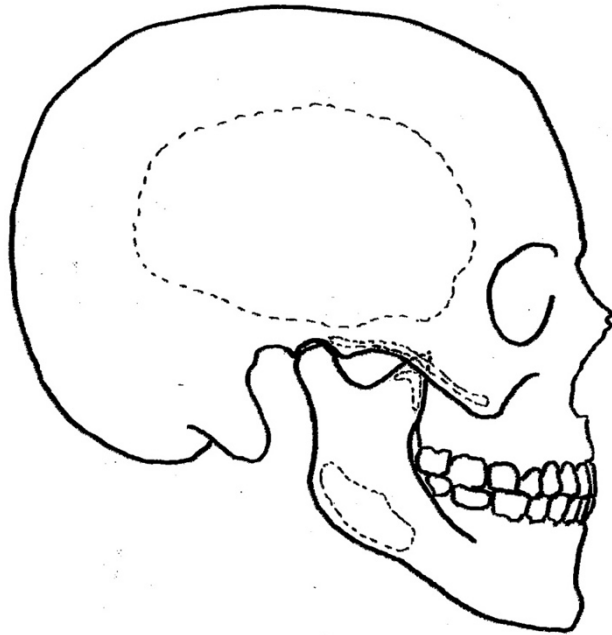
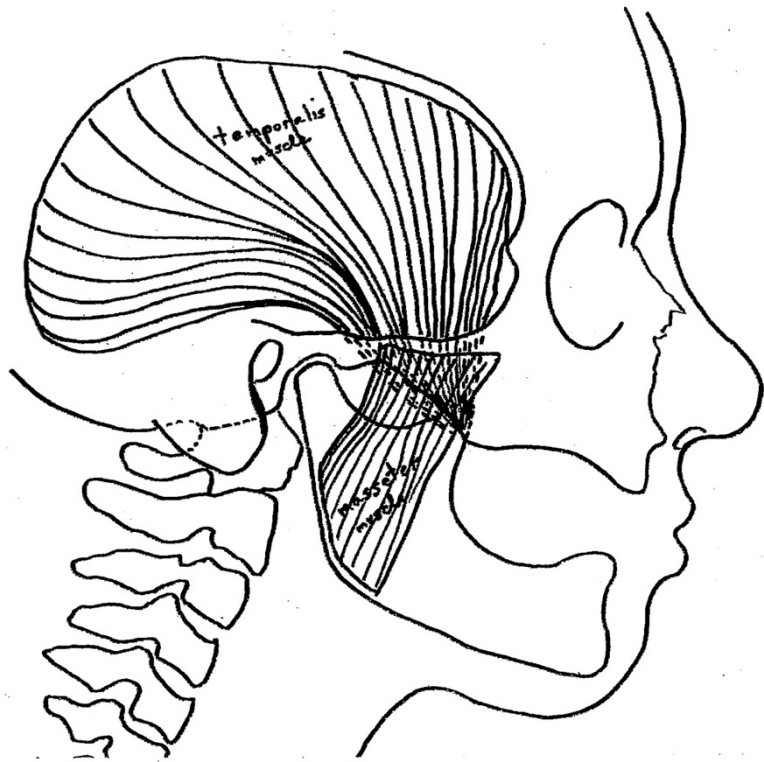


passively opened jaw

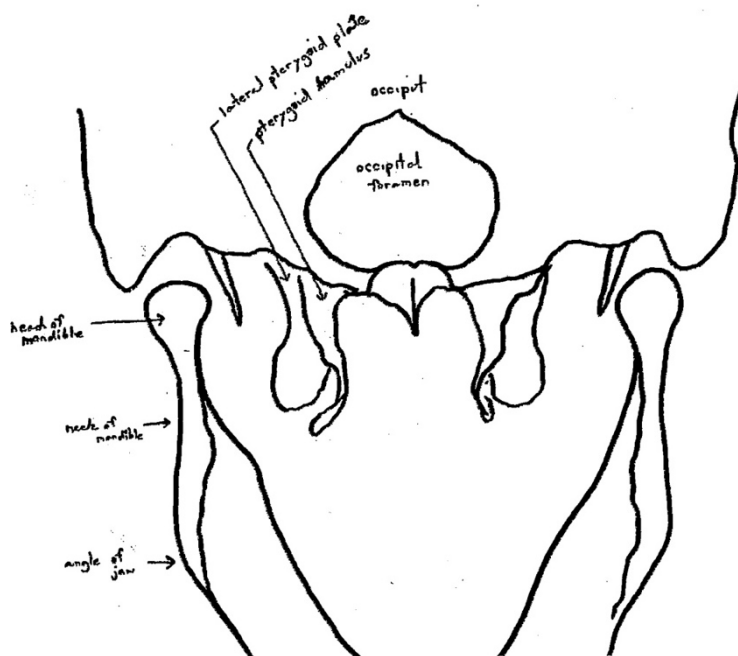
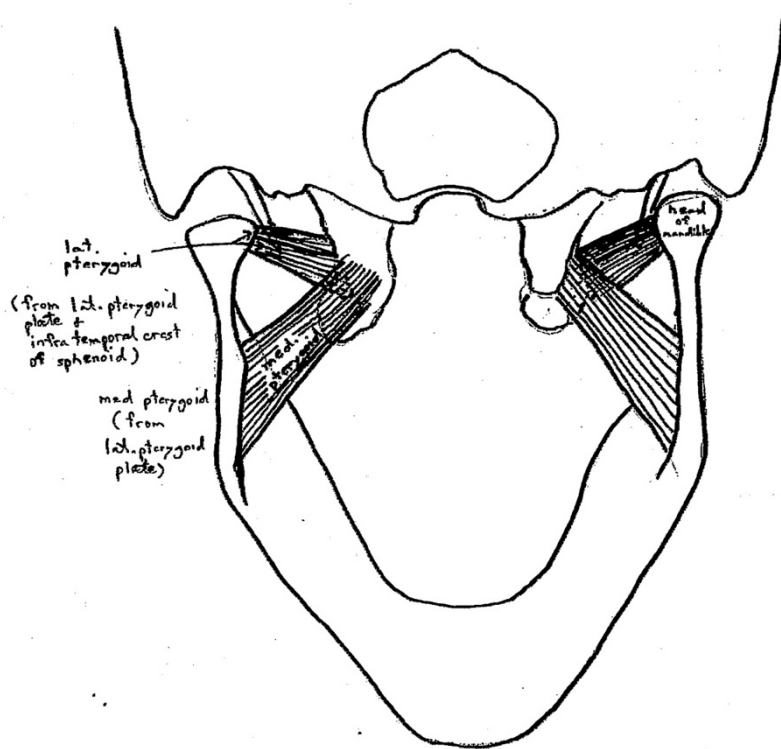


actively opened jaw



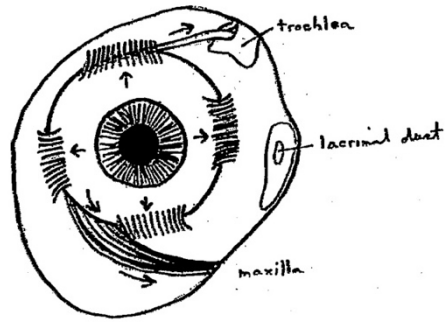


Inf. Post. View of Jaw

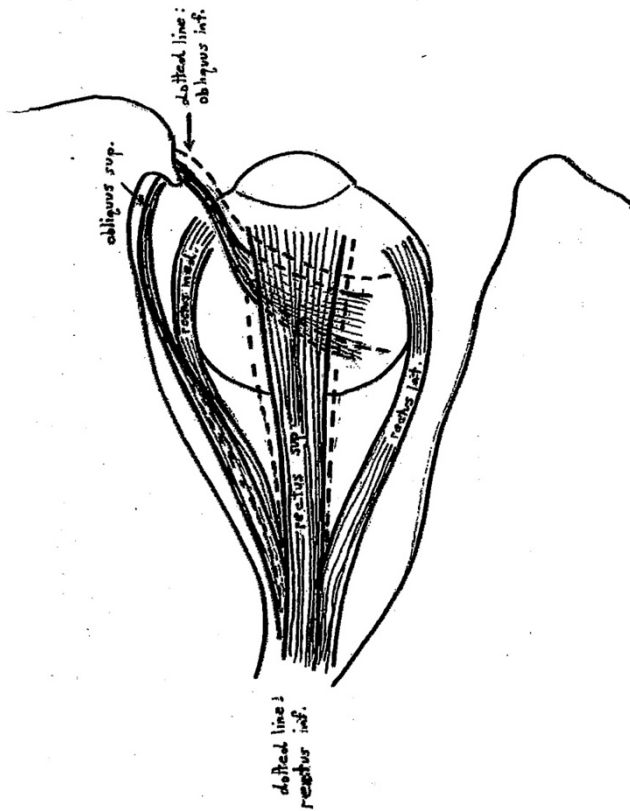


Front view of right eyeball

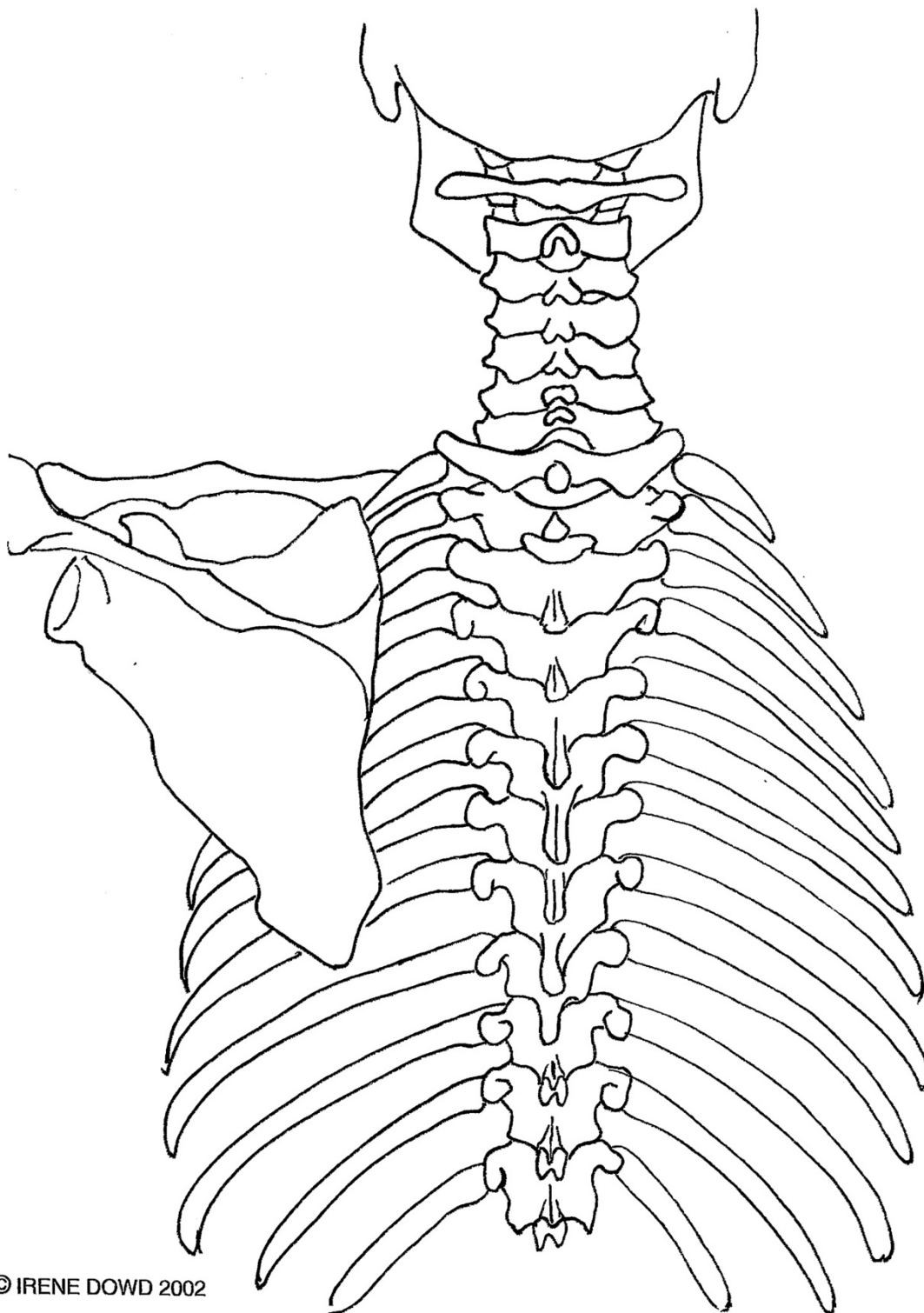
(arrows indicate actions of muscles)



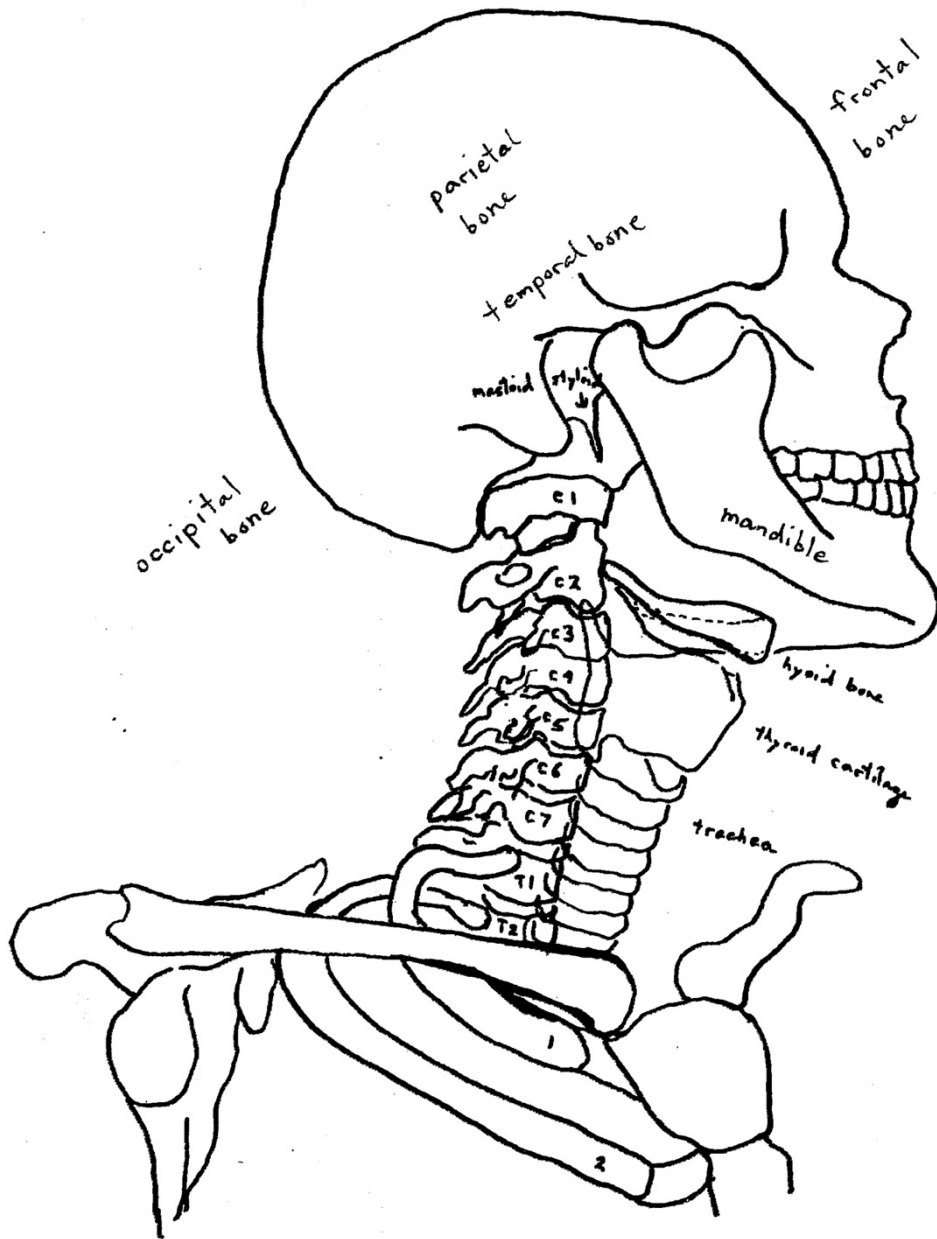
View from above of right eyeball



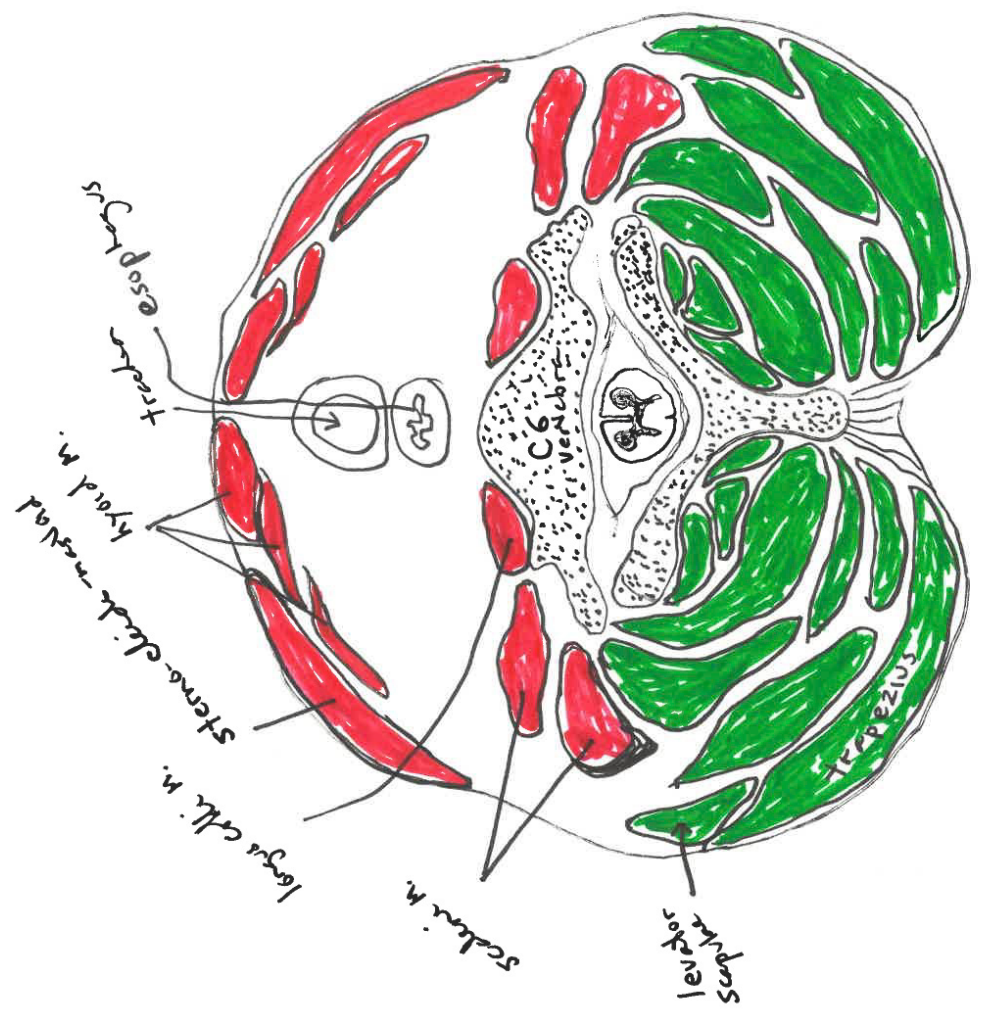
back view of neck and upper spine - note how jaw hangs down in front of neck



© IRENE DOWD 2002

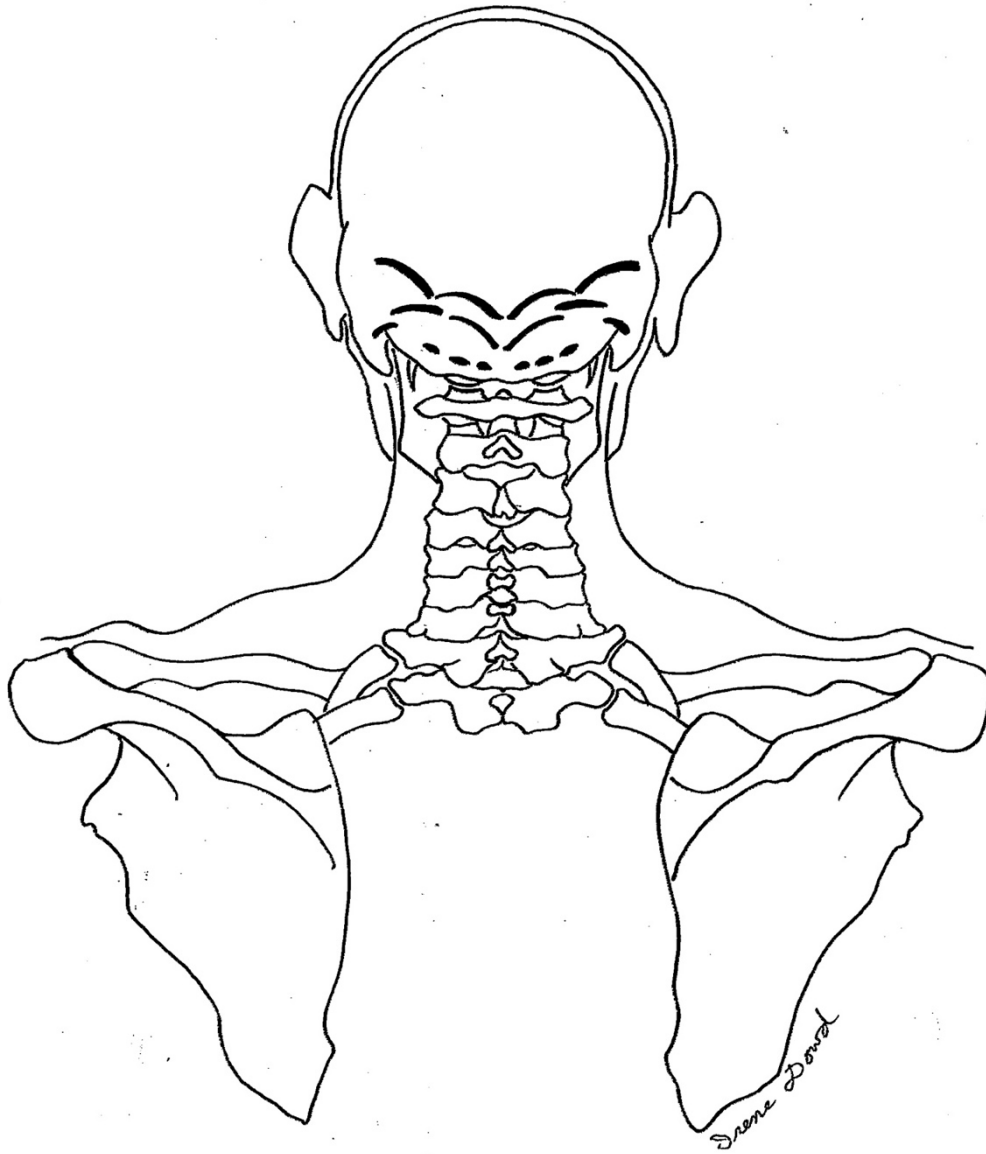


Post Neck  
1st + 2nd Neck

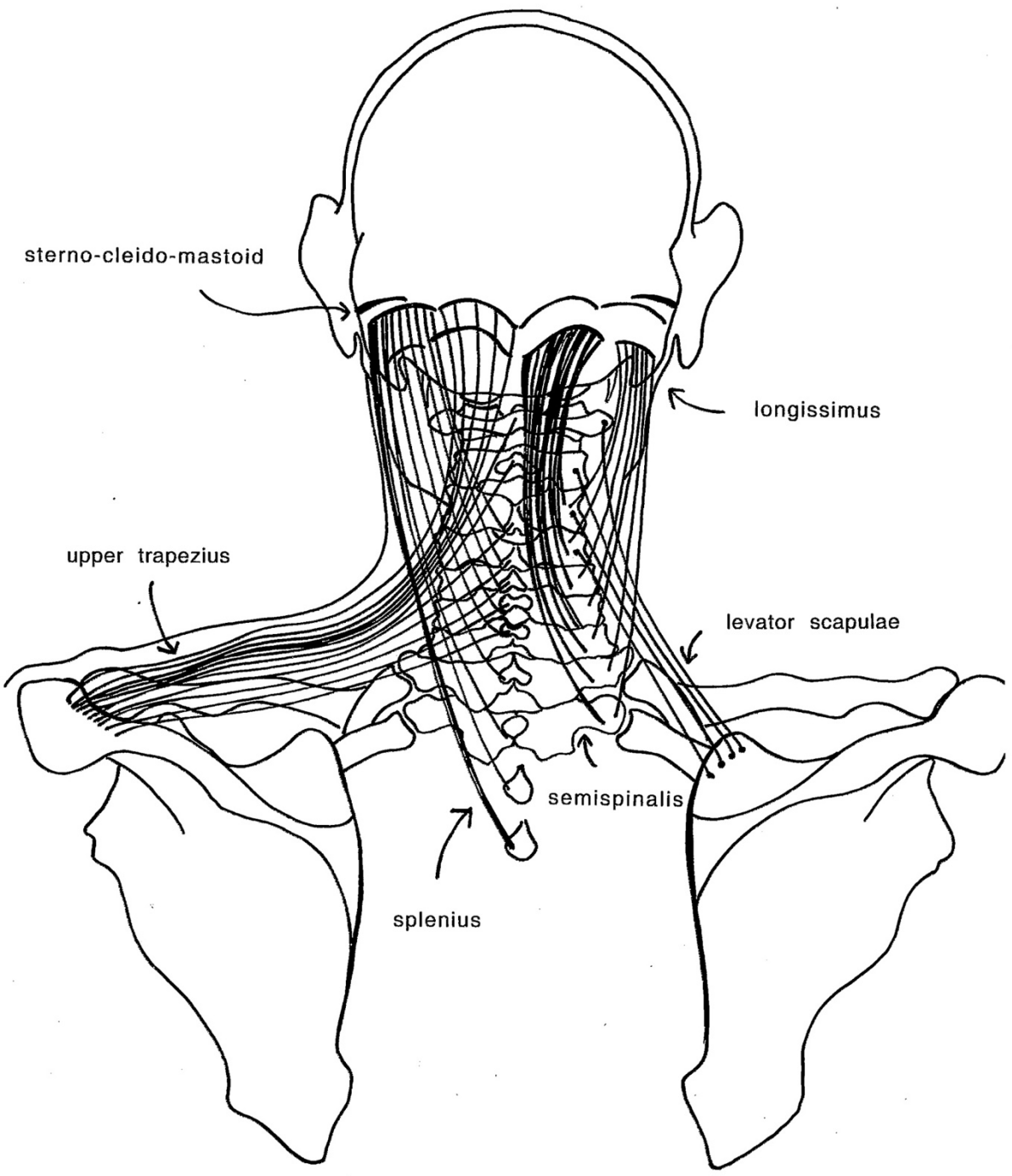




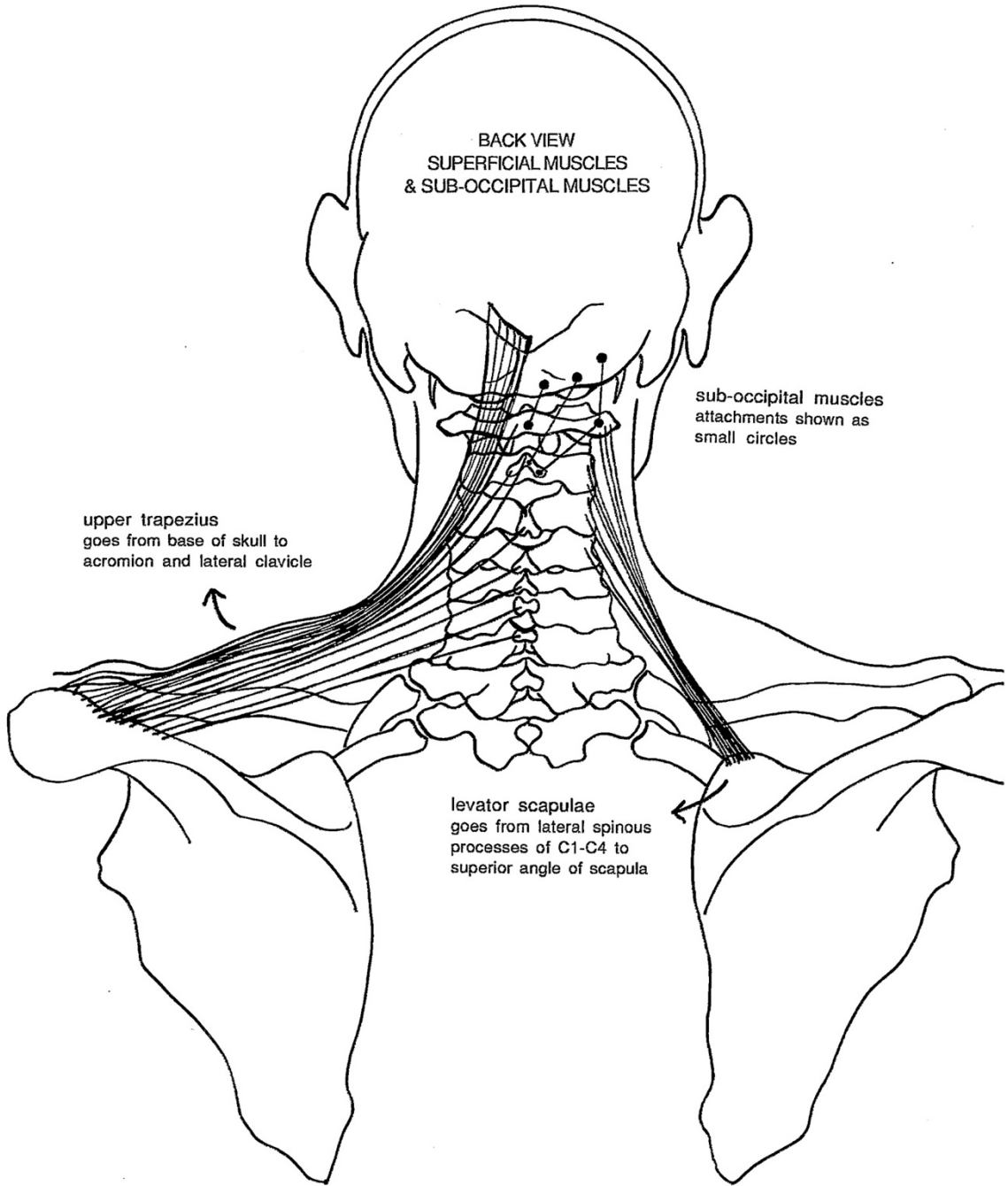
dark crescents represent attachments of muscles that attach to the base of the skull

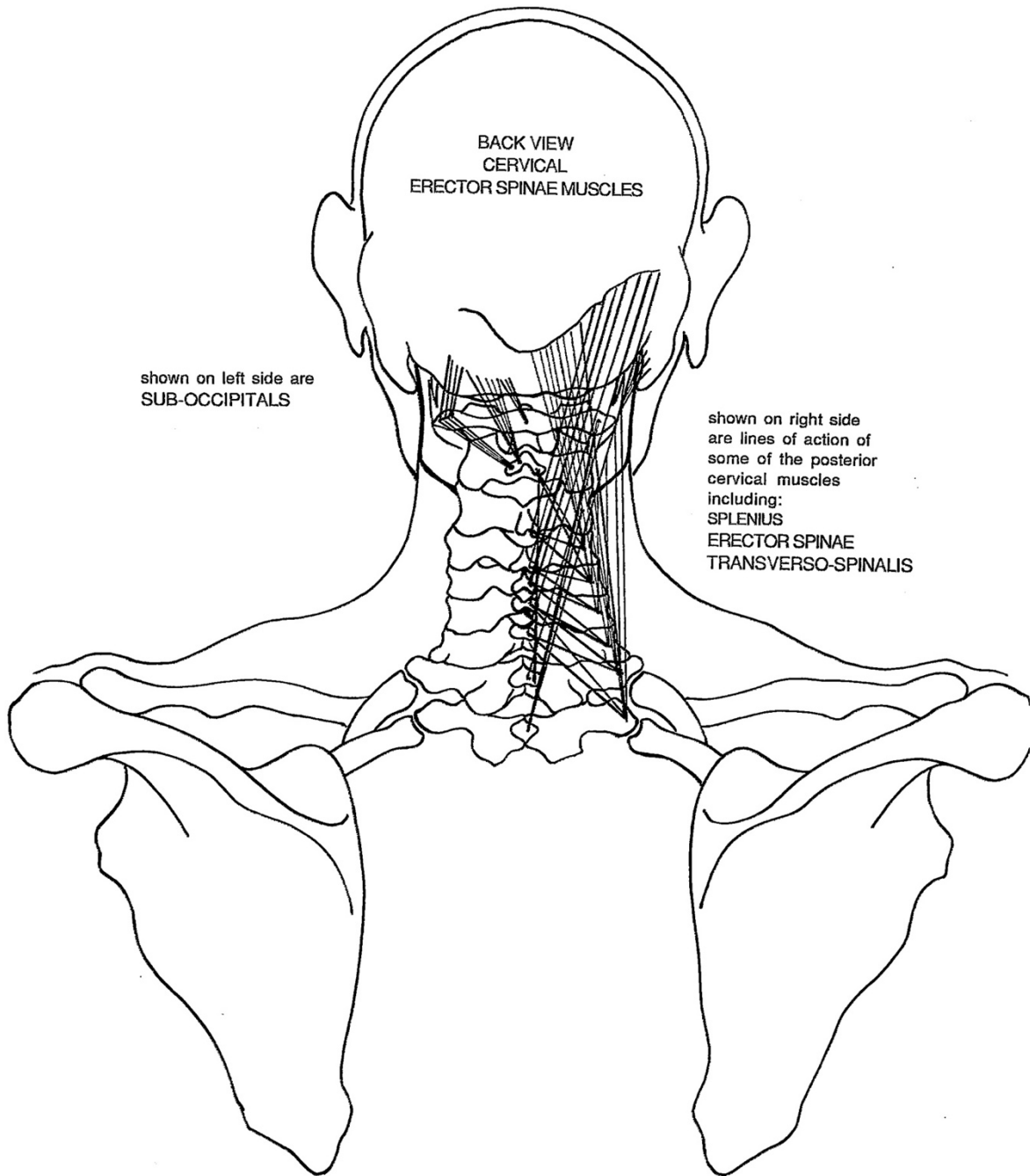


# MUSCLES OF THE POSTERIOR NECK



BACK VIEW  
SUPERFICIAL MUSCLES  
& SUB-OCCIPITAL MUSCLES

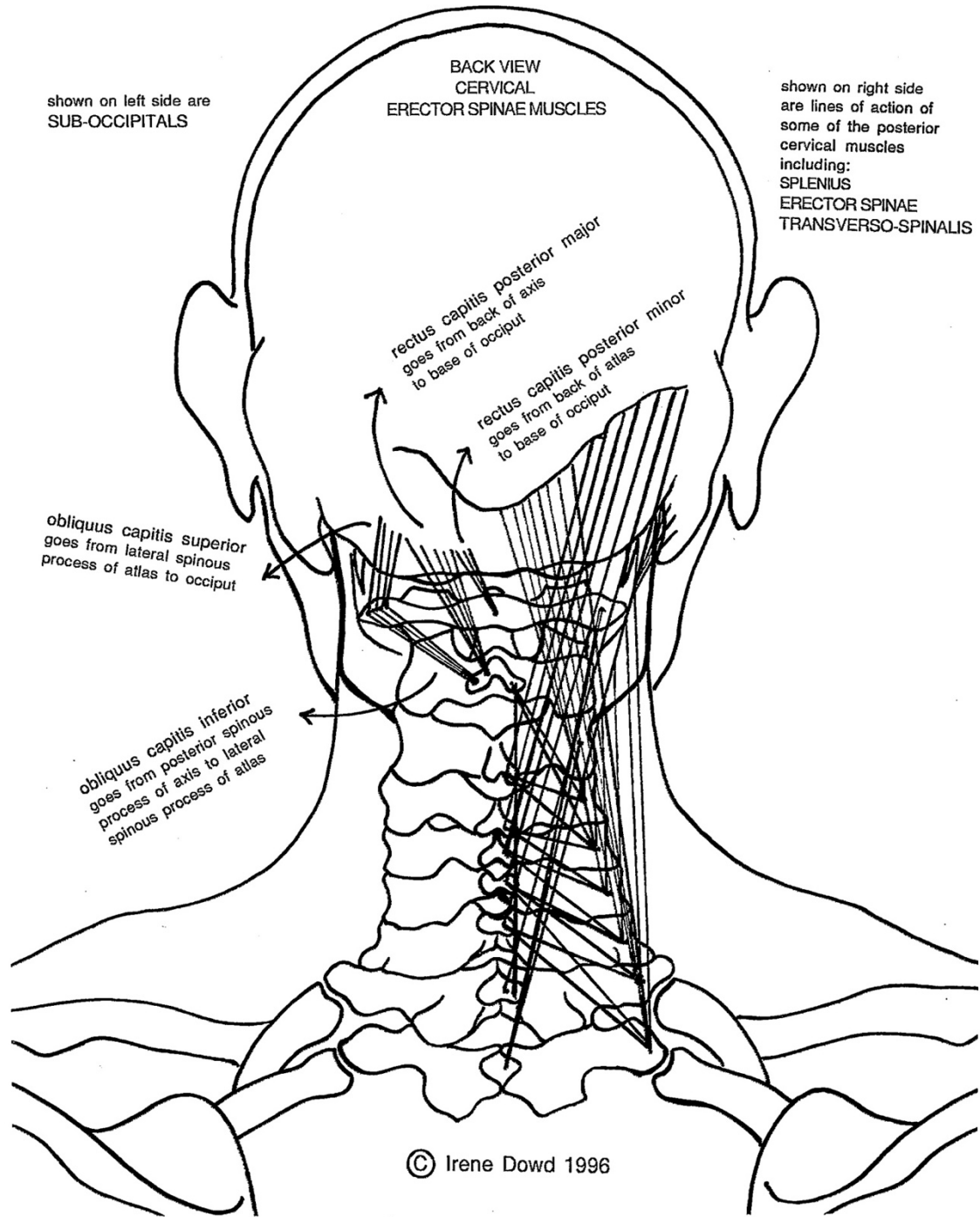




BACK VIEW  
CERVICAL  
ERECTOR SPINAE MUSCLES

shown on left side are  
SUB-OCCIPITALS

shown on right side  
are lines of action of  
some of the posterior  
cervical muscles  
including:  
SPLENIUS  
ERECTOR SPINAE  
TRANSVERSO-SPINALIS



shown on left side are  
SUB-OCCIPITALS

BACK VIEW  
CERVICAL  
ERECTOR SPINAE MUSCLES

shown on right side  
are lines of action of  
some of the posterior  
cervical muscles  
including:  
SPLENIUS  
ERECTOR SPINAE  
TRANSVERSO-SPINALIS

rectus capitis posterior major  
goes from back of axis  
to base of occiput

rectus capitis posterior minor  
goes from back of axis  
to base of occiput

obliquus capitis superior  
goes from lateral spinous  
process of atlas to occiput

obliquus capitis inferior  
goes from posterior spinous  
process of axis to lateral  
spinous process of atlas

